

# Glass Bead Install Tools

Concentricity is very critical for glass bead install, if concentricity is not good will not only influence the performance, but also easy to damage the connector. So take the glass bead install tools that will be a very good solution to solve this problem.

## 1. Install Tools for flange connectors

1) Usage: Include position tool and centring tool, position tool is used for positioning the flange concentric position, centring tool is used for guarantee the concentric of the glass bead.

Step 1: Fit the glass bead into the shell, wedge the solder into the welding gap.

Step 2: Choose the positioning tool which the hole spacing is same like the connector flange, and screw tightening.

Step 3: Screw the centring tool into the position tool, glass bead pin slide into the center hole, then screw tightening the centring tool.

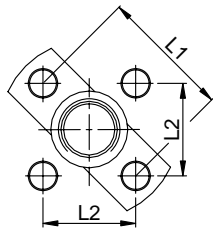
Step 4: Vertical heating the shell and install tools together.

Step 5: After cooling, remove the centring tool and the positioning tool.

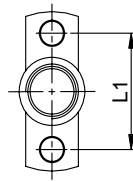
## 2) Tools Model

### a. Positioning tool

Positioning tools are all two hole structure, when install four hole flange, adopting diagonal installation.



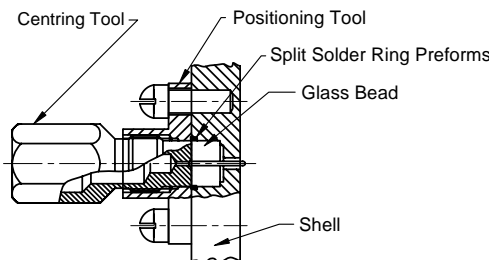
Four Hole Flange Install



Two Hole Flange Install

P/N	GT122	GT102	GT089	GT086
Hole spacing L1	12.2mm/.480"	10.2mm/.400"	8.9mm/.350"	8.6mm/.340"
Hole spacing L2	8.6mm/.339"	6.35mm/.250"		

### b. Centring tool



P/N	GCT09	GCT12	GCT15	GCT18	GCT20
Centring Dia.	0.23mm/.009"	0.30mm/.012"	0.38mm/.015"	0.46mm/.018"	0.51mm/.020"

## 2. Install Tool for threaded in connectors

### 1) Usage

Only need a centring tool to centring the glass bead.

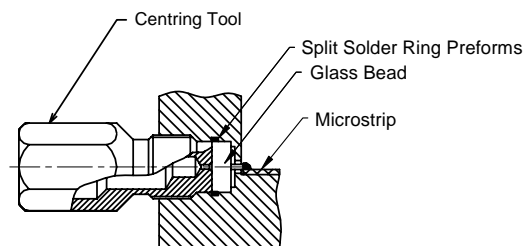
Step 1: Fit the glass bead into the shell, wedge the solder into the welding gap.

Step 2: Screw the centring tool into the mounting hole, glass bead pin slide into the center hole, then screw tightening the centring tool.

Step 3: Vertical heating the shell and the centring tool together.

Step 4: After cooling, remove the centring tool.

## 2) Tools Model



P/N	GCK09	GCK12	GCK15	GCK18	GCK20
Centring Dia.	0.23mm/.009"	0.30mm/.012"	0.38mm/.015"	0.46mm/.018"	0.51mm/.020"